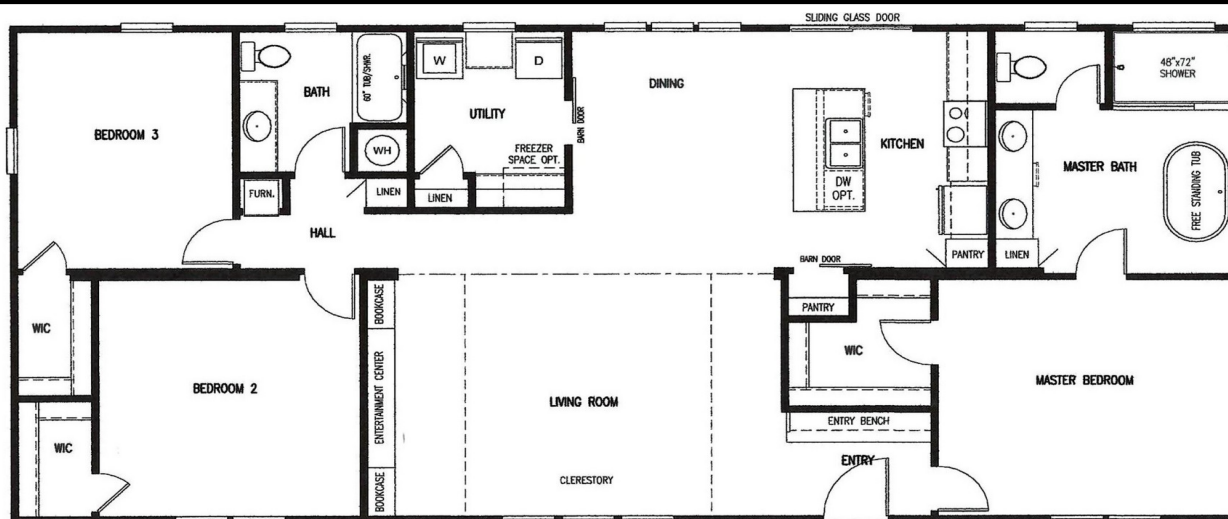




# THE "STEPHENS"

28' x 60' - 3 Bedroom / 2 Bathroom

[www.newvisionmfg.com](http://www.newvisionmfg.com)



## STANDARD FEATURES

**Metal Roof (R-Panel)**  
**2X4 Interior & Exterior Walls**  
**Solid Wood Cabinet Doors/Drawers**  
**Smart Board Siding**  
**22-11-28 Insulation**  
**Ceramic Lavatories**  
**42" Overhead Cabinets**  
**Wired/Braced for Ceiling Fans**  
**USB Plugs (Kitchen, M. Bed, Utility)**

**Thermal Pane Windows**  
**8' Flat Textured Ceilings**  
**Elongated Toilets**  
**Heavy Duty I-Beam Frame**  
**Recessed LED Lighting**  
**Fiberglass Tubs/Showers**  
**Insulated Duct Work**  
**Entertainment Center w/Jack**  
**Ext. GFI Plugs (Front & Back)**

**Stainless Steel Appliances (Side by Side, Smooth Top Range, Dishwasher, Microwave Vent-a-Hood)**  
**Stainless Steel Appliances**  
**72" Acrylic/Dura Shower**  
**Lino Throughout**  
**Window Awnings**  
**Overhead Ducts**  
**AC Disconnect**  
**Clerestory**

